

Equiv Technologies

PSIX Extractor (The Primavera P6 Data Extractor and Importer)

The PSIX Extractor is a proprietary tool developed by Equiv Technologies, designed for the purpose of retrieving information from the P6 EPPM database. This application facilitates the extraction of data in various formats, such as XER, P6 XML, and XLS, or alternatively, the data can be transferred to a customized database. Notably, the application possesses the capability to establish connections with P6 EPPM databases situated in On-Premises, Oracle EPPM Cloud, Equiv Primavera Cloud and P6 is located in any other Cloud locations (Azure, AWS, OCI, etc.)



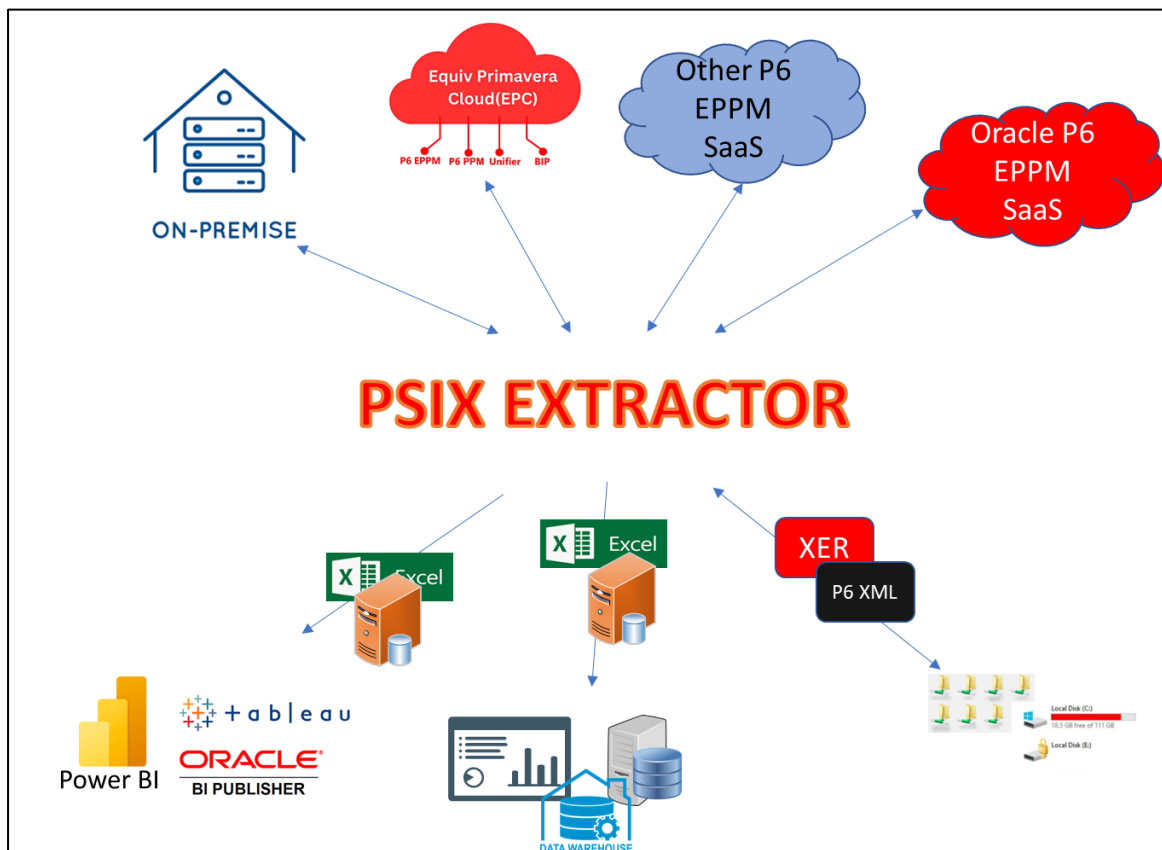
PSIX Extractor Modules:

- Automatically retrieve either a single XER file or multiple XER files from the P6 EPPM Database.
- Automatically upload either a single XER file or multiple XER files into the P6 EPPM Database.
- Automatically retrieve either a single P6 XML file or multiple P6 XML files from the P6 EPPM Database.
- Export P6 Data in XLSX format. This Excel data can serve as a data source for external applications like Reporting tools (Power BI, BI Publisher, and Tableau). Furthermore, it can be employed to provide extracted data to other ERPs or integrate it into a Data Warehouse.
- Export P6 Data into a customized database table, enabling the data to be used as a data source similar to the aforementioned Excel data.

<https://www.equivtech.com.au>
support@equivtech.com.au

+61 469864411
+91 9841969985

Equiv Technologies



Key Benefits:

- Extraction and export of P6 Data are possible from any P6 EPPM database, including Oracle P6 EPPM Cloud, On-Premises, and P6 databases hosted on Azure, AWS, and OCI.
- Utilizes Primavera web services, a SOAP-based API that operates at the business layer.
- Reduces the need for technical resources such as developers, P6 technical experts, P6 web services experts, DBAs, and infrastructure specialists.
- Data extraction supports various formats, including XER, P6 XML, XLS, and custom database tables.
- The application serves P6 data as data sources for reporting tools like Power BI, BI Publisher, Tableau, data warehouses, and other ERPs capable of reading data from Excel.
- Various methodologies can be employed for integration purposes, providing flexibility in connecting and utilizing P6 data

<https://www.equivtech.com.au>
support@equivtech.com.au

+61 469864411
+91 9841969985

Equiv Technologies

The image displays various configuration and export options within the PSIX EXTRACTOR application. Key features include:

- Import XER:** A form for importing XER files, including fields for XER Location, EPS Id, PS Installed Location, and Database Alias.
- Import XML:** A form for importing XML files, including fields for XML Folder Location, EPS Id, and options to create or update projects.
- Export Options:**
 - Export Type:** Options to export all data in one sheet or all in separate sheets.
 - Excel location:** A field to specify the location of the exported Excel file.
 - Export into Database:** Options to select a database type and existing configuration.
 - Export into Flat File:** Options to specify a flat file location.
- Scheduler:** A dialog box for scheduling exports, including fields for Job Name, Job Description, Schedule Start/End, and frequency (Run Now, One Time, Daily At, Weekly, Monthly, Sunday-Saturday).
- Field Selection:** A grid of fields for selection, including Project Fields, Project codes, Project UDF, Activity Fields, Activity Codes(Global), Activity Codes(EPS), Activity Codes(Project), Relationship, Resource Assignment, and Activity UDF.

Key Features:

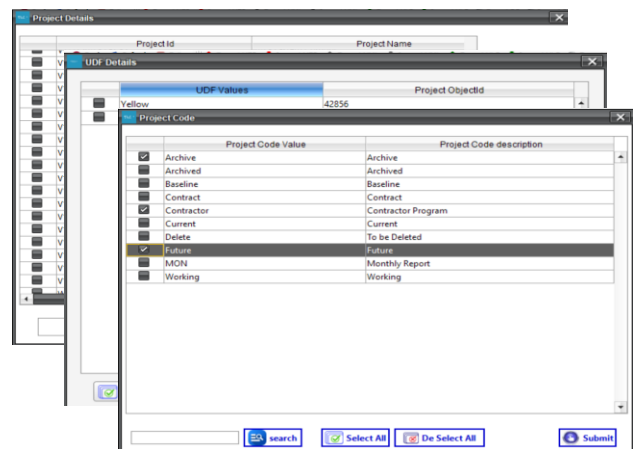
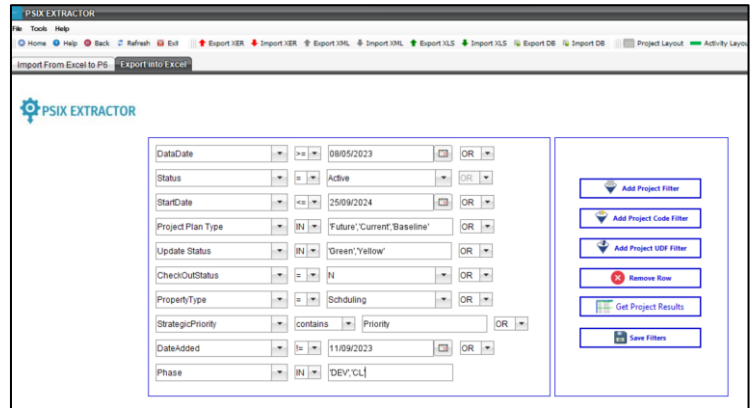
- The filter functionality closely resembles that of P6.
- Over 500+ P6 columns, encompassing Project fields, Activity fields, Assignment, and Relationship fields can be exported to Excel and custom tables.
- An automatic scheduler is provided for exporting data at specified intervals.
- Data can be extracted from any tables from P6 databases.
- Automated export and import functions for XER and P6 XML formats are available.
- Extraction of this data requires only a web services license.
- The data extraction logic adheres to P6 web services, ensuring impeccable data integrity.
- There's no need for a separate login; users with web services access can utilize their existing P6 login credentials.

<https://www.equivtech.com.au>
support@equivtech.com.au

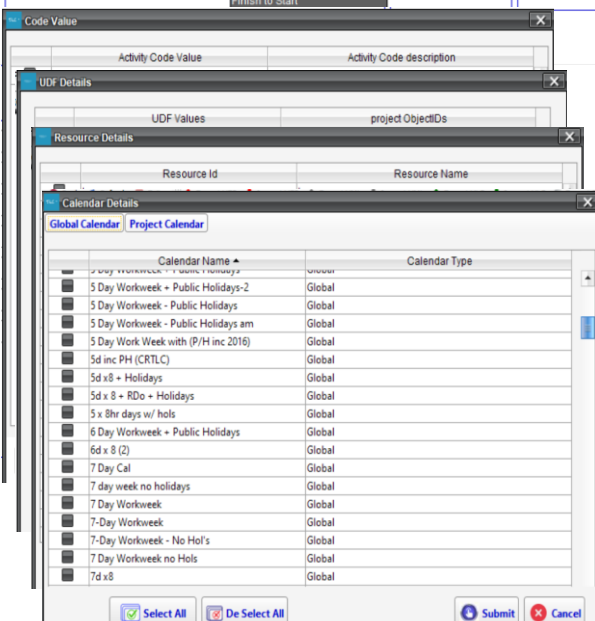
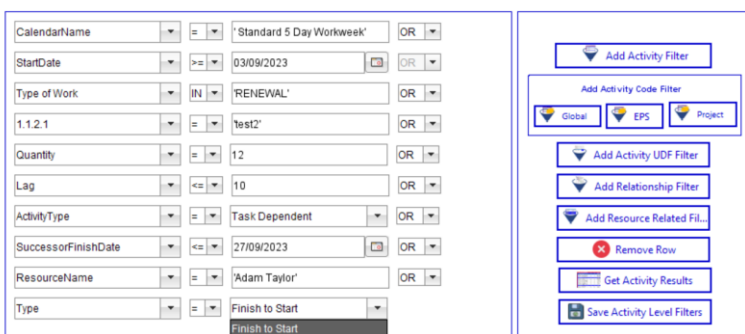
+61 469864411
+91 9841969985

Project Filter

- Apply multiple filters and sub-filters for data transformation.
- Utilize project fields, project codes, and project UDF filters to export data in XER, XML, and XLS formats.
- Apply sub-filters such as combinations of multiple project codes and/or multiple UDFs with project fields.
- Experience automatic pop-up selection for values, including lists of projects, project codes, and project UDFs from P6 EPPM database.
- Choose values similar to the P6 interface, such as a status selection box with options like 'planned,' 'Active,' and 'What IF.'
- Utilize up to 10 primary filters, excluding various sub-filters
- Save your logic and filters for future modifications.
- Schedule the data export



Activity Filters



- Activity fields, Activity code (Global, EPS, Projects) UDF, Relationship fields and resources assignment fields are available for filtering export data as XER, XML and XLS
- Auto Popup of selecting value like list of Activity codes(Global, EPS & Project), UDF, resource details and resource assignment fields.
- Extensive dates filtering (Eg: Data Date, Start Date, End Date, Schedule Date, etc.)
- Save logic/Filters for future modification
- Schedule data export.

<https://www.equivtech.com.au>
support@equivtech.com.au

+61 469864411
+91 9841969985